



APPLICATION:

## Cables Through Slab

ID:

CP638:  
MP-RF-E-01

## INFORMATION:

- Not to scale
- All units are in millimetres
- Tested according EN 1366-3
- Classification Report 23003B

CP 638 Mortar

REV:

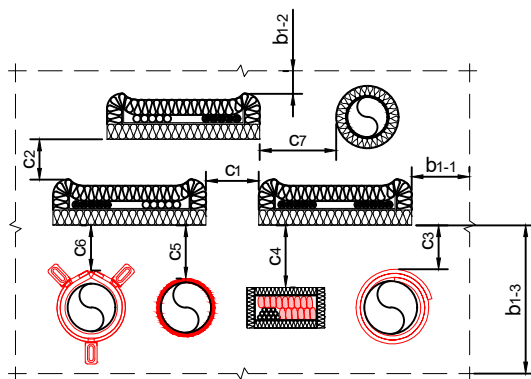
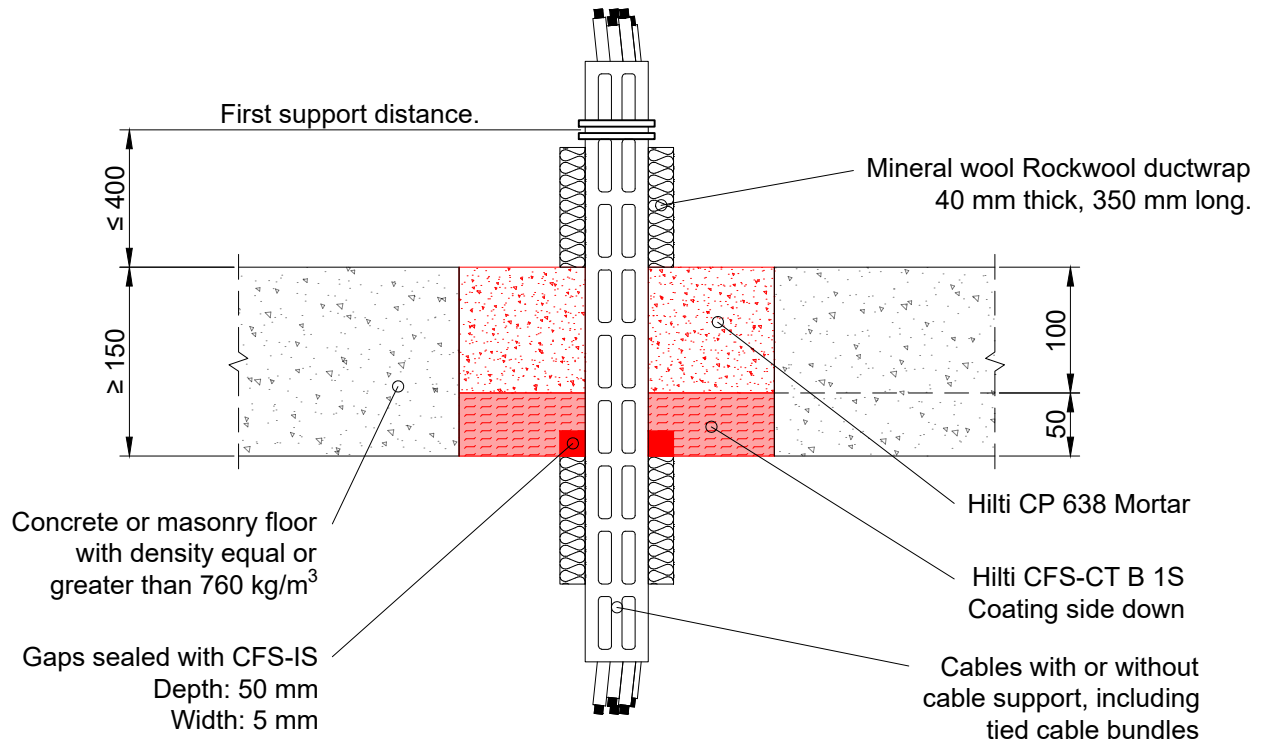
DATE:

02

05/2025

Fire Rating up to EI 180

Page 1/1



Maximum opening size without additional support:  
2000 x 1800 mm or reduced width, with up-to 10m  
length. See classification report for further details.

Cable description	Classification
Single cables max Ø 21 mm	EI 180
Cables bundles ≤ Ø 100 mm, max. cable ≤ Ø 21 mm	EI 180
Non-sheathed cables ≤ Ø 24 mm	EI 180
Coaxial cables ≤ Ø 28 mm	EI 120
Cables with 22 ≤ Ø ≤ 80 mm	EI 120

Description	Shortcut	Distance
Cable/cable carrier and aperture edge aside	b <sub>1-1</sub>	0 mm
Cable/cable carrier and aperture edge above	b <sub>1-2</sub>	0 mm
Cable/cable carrier and aperture edge below	b <sub>1-3</sub>	0 mm
Cable/cable carrier and other cables/cable carriers in linear arrangement	c <sub>1</sub>	0 mm
Cable/cable carrier and other cables/cable carriers below	c <sub>2</sub>	50 mm
To other pipes sealed with CFS-B	c <sub>3</sub>	0 mm
To metal trunking	c <sub>4</sub>	25 mm
To other pipes sealed with CFS-S ACR	c <sub>5</sub>	0 mm
To other pipes sealed with CFS-C EL	c <sub>6</sub>	0 mm
To any other services	c <sub>7</sub>	100 mm

1. The application limits on this detail are for guidance purposes only. For more detailed information based on the full range of available test results please contact the Hilti Technical Advisory Service.

2. The product and application has been assessed as a minimum to the BS 476 standard. It may have additional European and worldwide testing. Please contact Hilti for further information.

3. All installations should be carried out in accordance with Hilti's installation instructions and by competent & experienced installers using Hilti branded products.

4. All services are to be correctly and adequately supported to prevent collapse and distortion.

Hilti (Gt. Britain) Limited | No 1, Circle Square | 3 Symphony Park | Manchester | M1 7FS

Freephone: 0800 886 100 | Website: [www.hilti.co.uk](http://www.hilti.co.uk)

**LEGAL NOTICE:** This template contains Hilti Intellectual Property which is legally protected, including Community registration of Hilti trademarks. For use only by Hilti customers and in conjunction with Hilti products. No third party use/products is authorised and breaches Hilti's intellectual property rights. Hilti accepts no responsibility for unauthorized use and reserves all rights to take legal action to enforce its rights in law.