



APPLICATION:

Conduits Through Slab

ID:

CP638:
MP-RF-E-02

INFORMATION:

- Not to scale
- All units are in millimetres
- Tested according EN 1366-3
- Classification Report 23003B

CP 638 Mortar + CFS-B

REV:

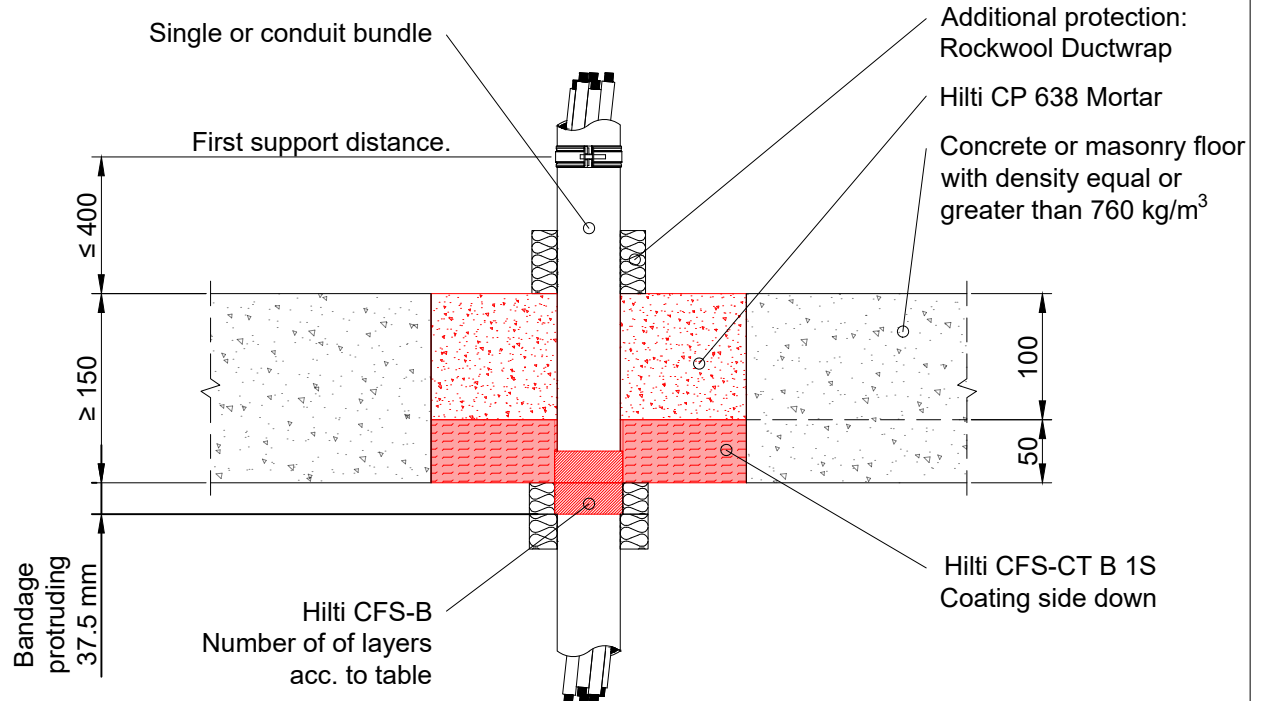
DATE:

02

05/2025

Fire Rating up to EI 120

Page 1/1

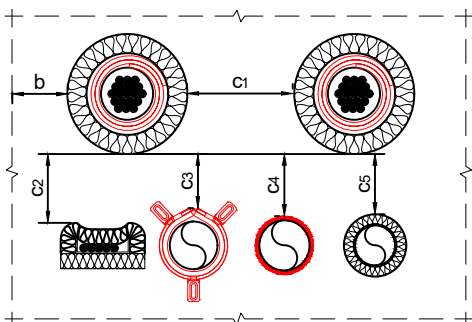


Notes:

1. All gaps around services and coated board edges filled with Hilti Firestop Acrylic Sealant CFS-S ACR

All single flexible and pliable plastic conduits with or without cable, wave height up-to 7.1 mm. Conduits type continued where both ends are open or closed in practice are covered. All sizes of cables currently and commonly used which fits the conduits are covered. Non sheathed cables are not covered. Cable carriers cannot penetrate the seal.

Number of layers	Max. single conduit diameter	Max. bundle diameter	Min. conduit protrusion on both side of floor	Additional protection: thickness x length	Fire rating in mixed opening
2	≤ 25	10	400	25 x 250	EI 120-U/U
2	≤ 50	10	400	25 x 250	EI 60-U/U



Spacing overview for mixed seals

Description	Shortcut	Distance
To seal edge	b	≥ 50 mm
To other pipes with CFS-B	c ₁	≥ 38 mm
To cables with CFS-IS	c ₂	≥ 0 mm
To other services with CFS-C EL	c ₃	≥ 0 mm
To other services with CFS-C ACR	c ₄	≥ 0 mm
To any other services	c ₅	≥ 100 mm

Maximum opening size without additional support: 2000 x 1800 mm
or reduced width, with up-to 10m length. See classification report for further details.

1. The application limits on this detail are for guidance purposes only. For more detailed information based on the full range of available test results please contact the Hilti Technical Advisory Service.
2. The product and application has been assessed as a minimum to the BS 476 standard. It may have additional European and worldwide testing. Please contact Hilti for further information.
3. All installations should be carried out in accordance with Hilti's installation instructions and by competent & experienced installers using Hilti branded products.
4. All services are to be correctly and adequately supported to prevent collapse and distortion.

Hilti (Gt. Britain) Limited | No 1, Circle Square | 3 Symphony Park | Manchester | M1 7FS

Freephone: 0800 886 100 | Website: www.hilti.co.uk

LEGAL NOTICE: This template contains Hilti Intellectual Property which is legally protected, including Community registration of Hilti trademarks. For use only by Hilti customers and in conjunction with Hilti products. No third party use/products is authorised and breaches Hilti's intellectual property rights. Hilti accepts no responsibility for unauthorized use and reserves all rights to take legal action to enforce its rights in law.