



APPLICATION:

Plastic Pipes Through Slab

ID:

CP638:
MP-RF-M-06

INFORMATION:

- Not to scale
- All units are in millimetres
- Tested according EN 1366-3
- Classification Report 23003B

CP 638 Mortar + CFS-B

REV:

DATE:

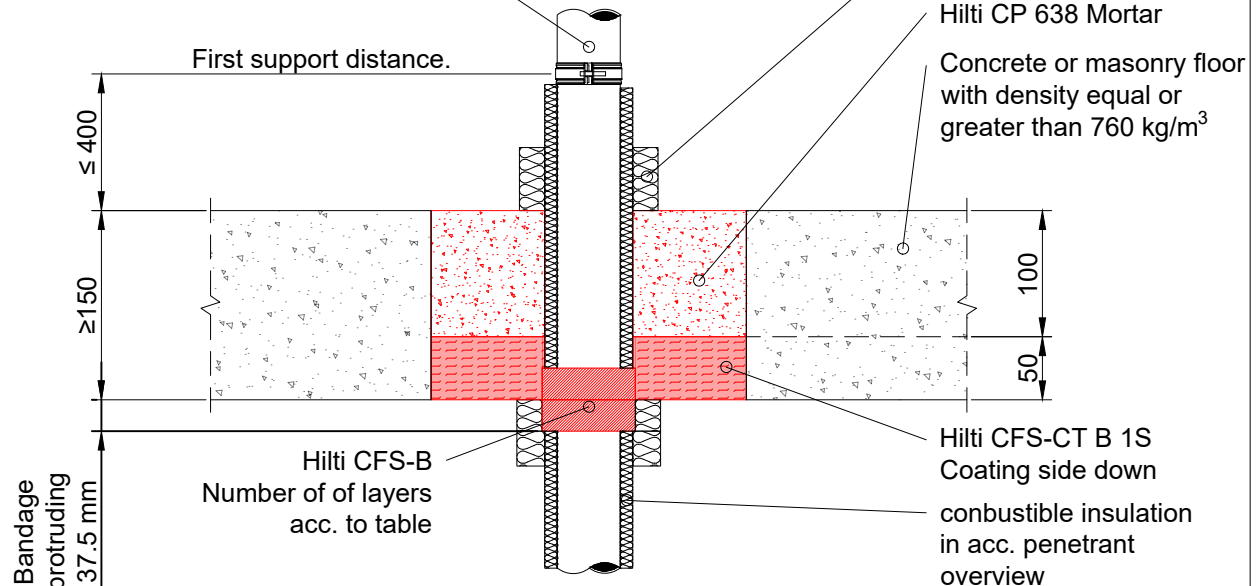
02

05/2025

Fire Rating up to EI 120

Page 1/1

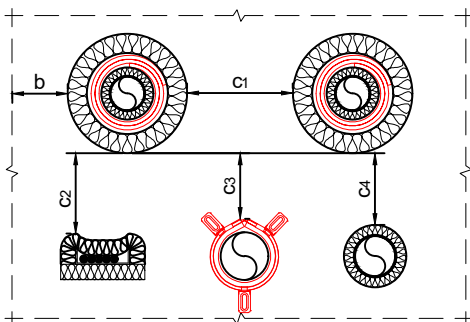
Copper or composite pipe in acc. table



Notes:

1. All gaps around services and coated board edges filled with Hilti Firestop Acrylic Sealant CFS-S ACR

Copper, steel and stainless steel pipes insulated with combustible insulation Armaflex AF					
Number of layers	Diameter	Min. wall thickness	Continued sustained: Armaflex AF thickness	Additional protection: thickness x length	Fire rating in mixed opening
1	≤ 28	0.9	9 to 32	40 x 250	EI 120-C/U
1	≤ 54	1.2	19 to 32	40 x 250	EI 120-C/U
1	≤ 108	1.5	19 to 32	40 x 250	EI 90-C/U
1	≤ 108	1.5	19 to 25	40 x 250	EI 120-C/U
Copper, steel and stainless steel pipes insulated with combustible insulation Kingspan Kooltherm					
1	≤ 28	0.9	15 to 40	25 x 250	EI 120-C/U
1	≤ 54	1.2	15 to 40	25 x 250	EI 120-C/U
1	≤ 108	1.5	20 to 40	25 x 250	EI 120-C/U
Uponor Uni Pipe MLCP insulated with Armaflex AF					
2	50 to 110	4.5 to 10	9 to 32	25 x 250	EI 120-C/U



Spacing overview for mixed seals

Description	Shortcut	Distance
To seal edge	b	≥ 50 mm
To other pipes with CFS-B	c ₁	≥ 38 mm
To cables with CFS-IS	c ₂	0 mm
To other services with CFS-C EL	c ₃	0 mm
To any other services	c ₄	≥ 100 mm

Maximum opening size without additional support: 2000 x 1800 mm or reduced width, with up-to 10m length. See classification report for further details.

1. The application limits on this detail are for guidance purposes only. For more detailed information based on the full range of available test results please contact the Hilti Technical Advisory Service.
2. The product and application has been assessed as a minimum to the BS 476 standard. It may have additional European and worldwide testing. Please contact Hilti for further information.
3. All installations should be carried out in accordance with Hilti's installation instructions and by competent & experienced installers using Hilti branded products.
4. All services are to be correctly and adequately supported to prevent collapse and distortion.

Hilti (Gt. Britain) Limited | No 1, Circle Square | 3 Symphony Park | Manchester | M1 7FS

Freephone: 0800 886 100 | Website: www.hilti.co.uk

LEGAL NOTICE: This template contains Hilti Intellectual Property which is legally protected, including Community registration of Hilti trademarks. For use only by Hilti customers and in conjunction with Hilti products. No third party use/products is authorised and breaches Hilti's intellectual property rights. Hilti accepts no responsibility for unauthorized use and reserves all rights to take legal action to enforce its rights in law.