



APPLICATION:

Conduits Through Flexible & Rigid Wall

ID:

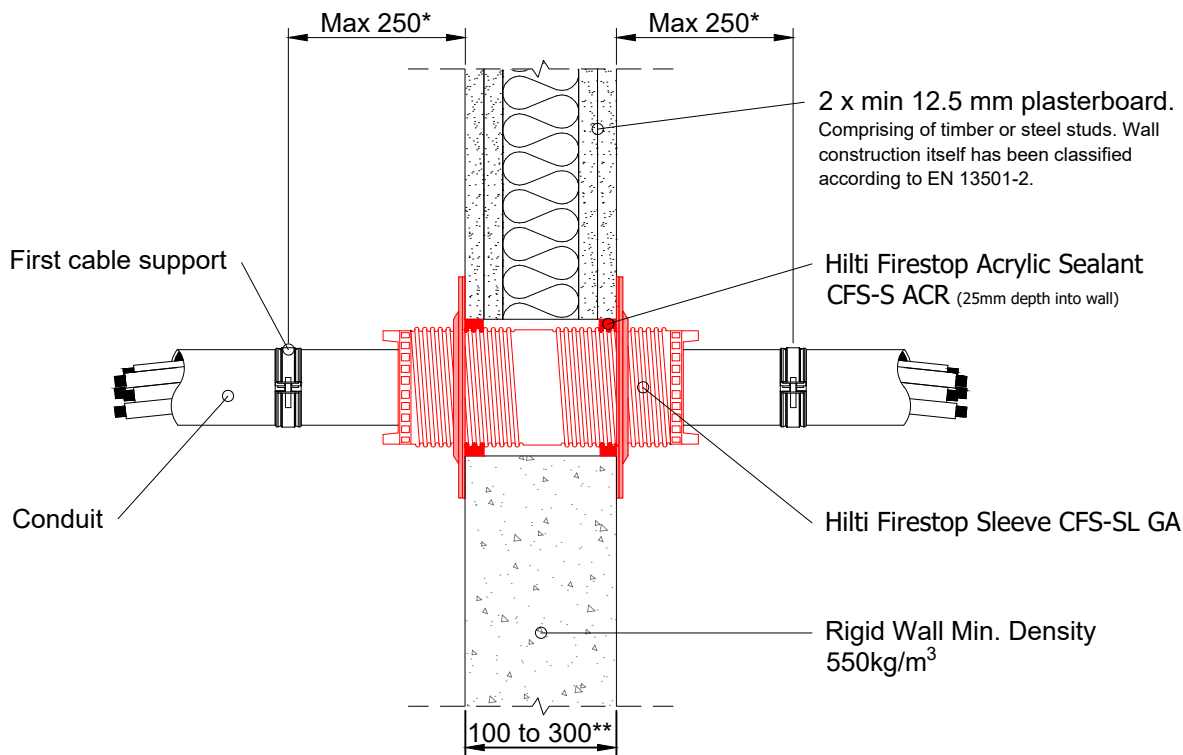
**SL-GA:
SP-FW/RW-E-02****INFORMATION:**

- Not to scale
- All units are in millimetres
- Tested according EN 1366-3
- [Approval ETA - 20-1234](#)

CFS-SL GA and CFS-S ACR

REV:

DATE:

01**03/2025****Fire Rating EI 120****Page 2/2**

| Device | Opening Ø |
|---------------|--------------|
| CFS-SL GA S | 63 - 73 mm |
| CFS-SL GA M/L | 113 - 122 mm |

| Penetrating services | Description |
|---|--|
| Single conduits Ø ≤ 25mm: CFS-SL GA S | Rigid, flexible and pliable plastic conduits and metal conduits with a diameter Ø ≤ 25mm with or without cables |
| Single conduits Ø ≤ 63mm: CFS-SL GA M/L | Rigid, flexible and pliable plastic conduits and metal conduits with a diameter Ø ≤ 63mm with or without cables |
| Conduits bundle: CFS-SL GA S | Conduits with a max. single conduit diameter Ø ≤ 25mm with or without cables can be bundled to a diameter Ø ≤ 48mm |
| Conduits bundle: CFS-SL GA M/L | Conduits with a max. single conduit diameter Ø ≤ 63mm with or without cables can be bundled to a diameter Ø ≤ 92mm |

| Description | 200mm dist between Flanges | |
|------------------|----------------------------|---------------|
| | CFS-SL GA S | CFS-SL GA M/L |
| Conduits ≤ 63 mm | - | EI 120 |

(*) First support and ancillary products should be capable of achieving the same fire performance as the seal and supporting structure.

(**) **CFS-SL GA S/M:** Minimum thickness 100mm & maximum thickness 200 mm (Maximum thickness: 180mm if **CFS-SL GA M** in combination with Gangplate)

CFS-SL GA L: Minimum thickness 200mm & maximum thickness 300 mm (Maximum thickness: 280mm if **CFS-SL GA L** in combination with Gangplate)

Higher Fire Classification rating in specific flexible or rigid wall applications: Hilti Firestop Acrylic Sealant CFS-S ACR can be applied to seal annular gaps in place of Rubber Gaskets

1. The application limits on this detail are for guidance purposes only. For more detailed information based on the full range of available test results please contact the Hilti Technical Advisory Service.
2. The product and application has been assessed as a minimum to the BS 476 standard. It may have additional European and worldwide testing. Please contact Hilti for further information.
3. All installations should be carried out in accordance with Hilti's installation instructions and by competent & experienced installers using Hilti branded products.
4. All services are to be correctly and adequately supported to prevent collapse and distortion.

Hilti (Gt. Britain) Limited | No 1, Circle Square | 3 Symphony Park | Manchester | M1 7FS

Freephone: 0800 886 100 | Website: www.hilti.co.uk

LEGAL NOTICE: This template contains Hilti Intellectual Property which is legally protected, including Community registration of Hilti trademarks. For use only by Hilti customers and in conjunction with Hilti products. No third party use/products is authorised and breaches Hilti's intellectual property rights. Hilti accepts no responsibility for unauthorized use and reserves all rights to take legal action to enforce its rights in law.