



APPLICATION:

Cables Through Flexible & Rigid Wall

ID:

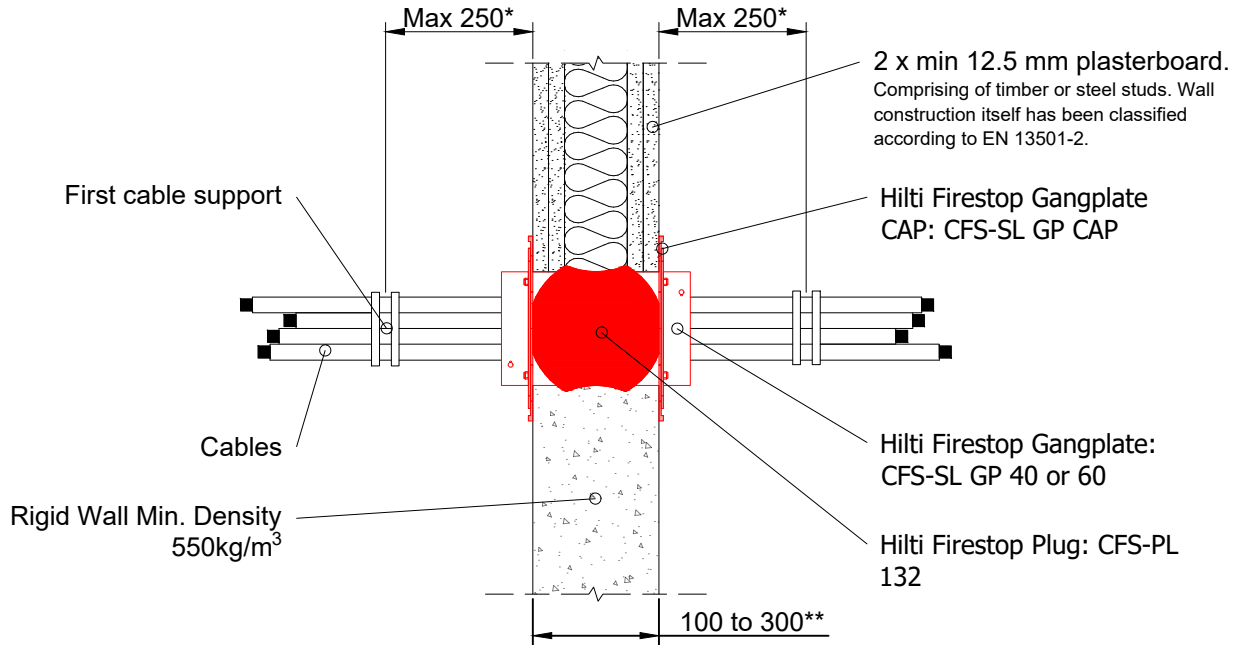
**SL-GA:
SP-FW/RW-E-03****INFORMATION:**

- Not to scale
- All units are in millimetres
- Tested according EN 1366-3
- [Approval ETA - 20-1234](#)

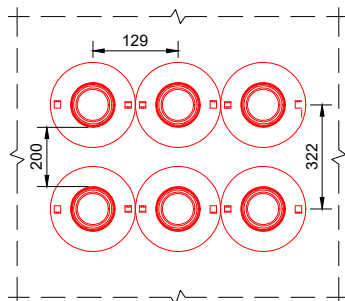
CFS-SL GA

REV:

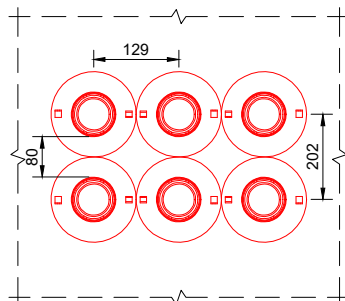
DATE:

01**03/2025****Fire Rating up to EI 120****Page 1/1**

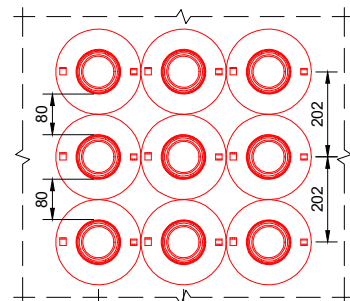
Depending on Fire Classification and space requirements, the Hilti Firestop Sleeve CFS-SL GP can be installed with:
≥ 200mm distance between openings, or Gangplates touching or slight overlap (zero distance)



200mm from Opening to nearest Opening - For Single to any number of installations



Zero Distance between Devices - For Double Gangplate installation: (200mm from one Double Gangplate to another Double Gangplate)



Zero Distance between Devices (200mm from one Triple Gangplate to another Triple Gangplate)

≥ 200mm Distance between Openings		
Flexible & Rigid wall	Blank Device to 100% filled Cables ≤ 21	EI 120
	Blank Seal (CAP and Plug)	
Double Gangplate Zero Distance between Devices		
Flexible & Rigid wall	Blank Device to 100% filled Cables ≤ 21	EI 90
	Blank Seal (CAP and Plug)	
Triple Gangplate (or more) Zero Distance between Devices		
Flexible & Rigid wall	Blank Device to 100% filled Cables ≤ 21	EI 60
	Blank Seal (CAP and Plug)	

(*) First support and ancillary products should be capable of achieving the same fire performance as the seal and supporting structure.

(**) **CFS-SL GA S/M:** Minimum thickness 100mm & maximum thickness 200 mm (Maximum thickness: 180mm if **CFS-SL GA M** in combination with Gangplate)
CFS-SL GA L: Minimum thickness 200mm & maximum thickness 300 mm (Maximum thickness: 280mm if **CFS-SL GA L** in combination with Gangplate)

- The application limits on this detail are for guidance purposes only. For more detailed information based on the full range of available test results please contact the Hilti Technical Advisory Service.
- The product and application has been assessed as a minimum to the BS 476 standard. It may have additional European and worldwide testing. Please contact Hilti for further information.
- All installations should be carried out in accordance with Hilti's installation instructions and by competent & experienced installers using Hilti branded products.
- All services are to be correctly and adequately supported to prevent collapse and distortion.

Hilti (Gt. Britain) Limited | No 1, Circle Square | 3 Symphony Park | Manchester | M1 7FS

Freephone: 0800 886 100 | Website: www.hilti.co.uk

LEGAL NOTICE: This template contains Hilti Intellectual Property which is legally protected, including Community registration of Hilti trademarks. For use only by Hilti customers and in conjunction with Hilti products. No third party use/products is authorised and breaches Hilti's intellectual property rights. Hilti accepts no responsibility for unauthorized use and reserves all rights to take legal action to enforce its rights in law.