



APPLICATION:

Cables Through Slab

ID:

CP638:
MP-RF-E-03

INFORMATION:

- Not to scale
- All units are in millimetres
- Tested according EN 1366-3
- Classification Report 23003B

CP 638 Mortar + CFS-SL GA

REV:

DATE:

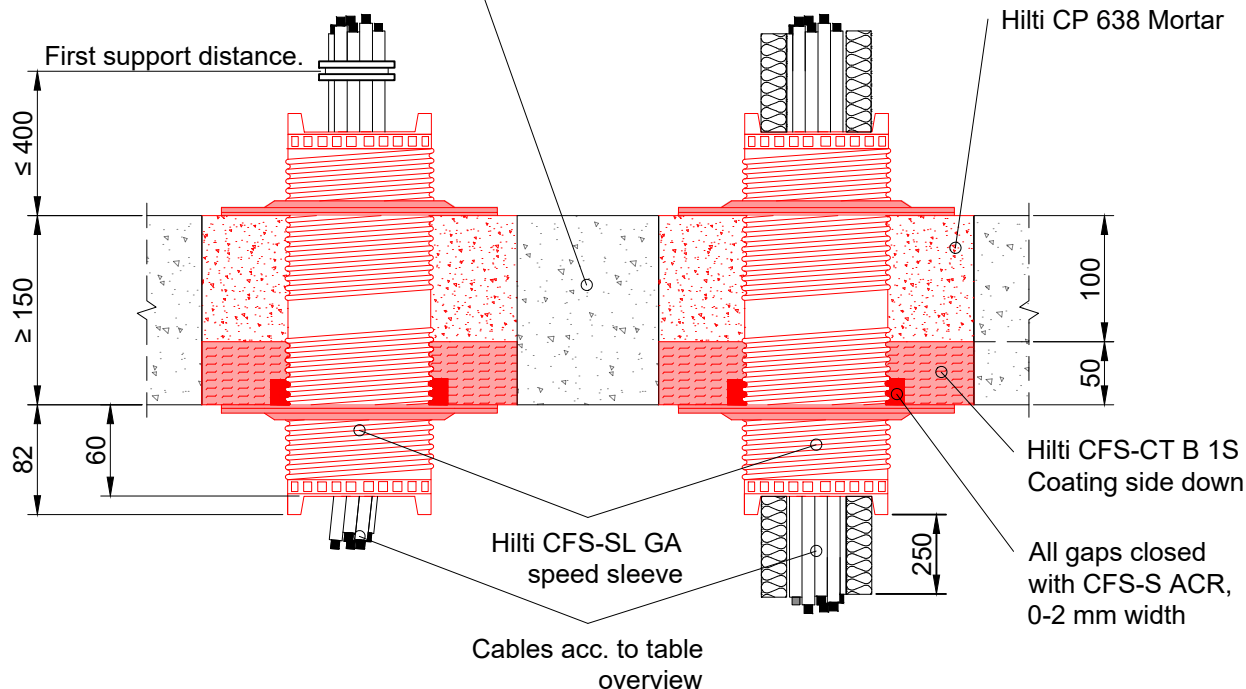
01

05/2025

Fire Rating up to EI 120

Page 1/1

Concrete or masonry floor with density
equal or greater than 760 kg/m^3

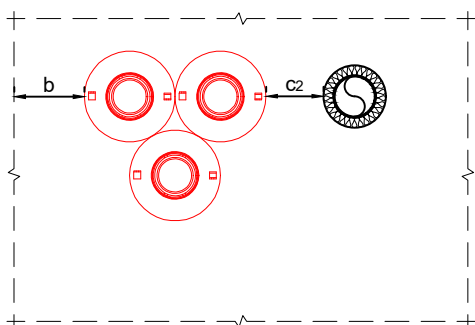


Notes:

1. All gaps around services and coated board edges filled with Hilti Firestop Acrylic Sealant CFS-S ACR.
2. Speed sleeve is positioned centrally, protruding 60 mm on both sides of the seal.

Cable penetration

Penetrant group	Dimensions	Cable protection	Fire rating in mixed opening
Tied cable bundle	Max. bundle outer diameter $\leq 80 \text{ mm}$, consist of cables $\leq 21 \text{ mm}$.	None	EI 120
All sheathed cables	$\leq 50 \text{ mm}$	None	EI 120
All sheathed cables	$\leq 80 \text{ mm}$	None	EI 90
Non-sheathed cables and wires	$\leq 24 \text{ mm}$	Rockwool DuctWrap, from both side of the floor. 40 mm thick, 250 mm long.	EI 120



Spacing overview for mixed seals

Description	Shortcut	Distance
To seal edge	b	$\geq 0 \text{ mm}$
To other cables sealed with CFS-SL GA M	c ₁	$\geq 0 \text{ mm}$
To any other services	c ₂	$\geq 100 \text{ mm}$

Maximum opening size without additional support: 2000 x 1800 mm
or reduced width, with up-to 10m length. See classification report for further details.

1. The application limits on this detail are for guidance purposes only. For more detailed information based on the full range of available test results please contact the Hilti Technical Advisory Service.
2. The product and application has been assessed as a minimum to the BS 476 standard. It may have additional European and worldwide testing. Please contact Hilti for further information.
3. All installations should be carried out in accordance with Hilti's installation instructions and by competent & experienced installers using Hilti branded products.
4. All services are to be correctly and adequately supported to prevent collapse and distortion.

Hilti (Gt. Britain) Limited | No 1, Circle Square | 3 Symphony Park | Manchester | M1 7FS

Freephone: 0800 886 100 | Website: www.hilti.co.uk

LEGAL NOTICE: This template contains Hilti Intellectual Property which is legally protected, including Community registration of Hilti trademarks. For use only by Hilti customers and in conjunction with Hilti products. No third party use/products is authorised and breaches Hilti's intellectual property rights. Hilti accepts no responsibility for unauthorized use and reserves all rights to take legal action to enforce its rights in law.