



APPLICATION:

Plastic pipes Through Slab

ID:

CP638:
MP-RF-M-03

INFORMATION:

- Not to scale
- All units are in millimetres
- Tested according EN 1366-3
- Classification Report 23003B

CP 638 Mortar + CFS-B

REV:

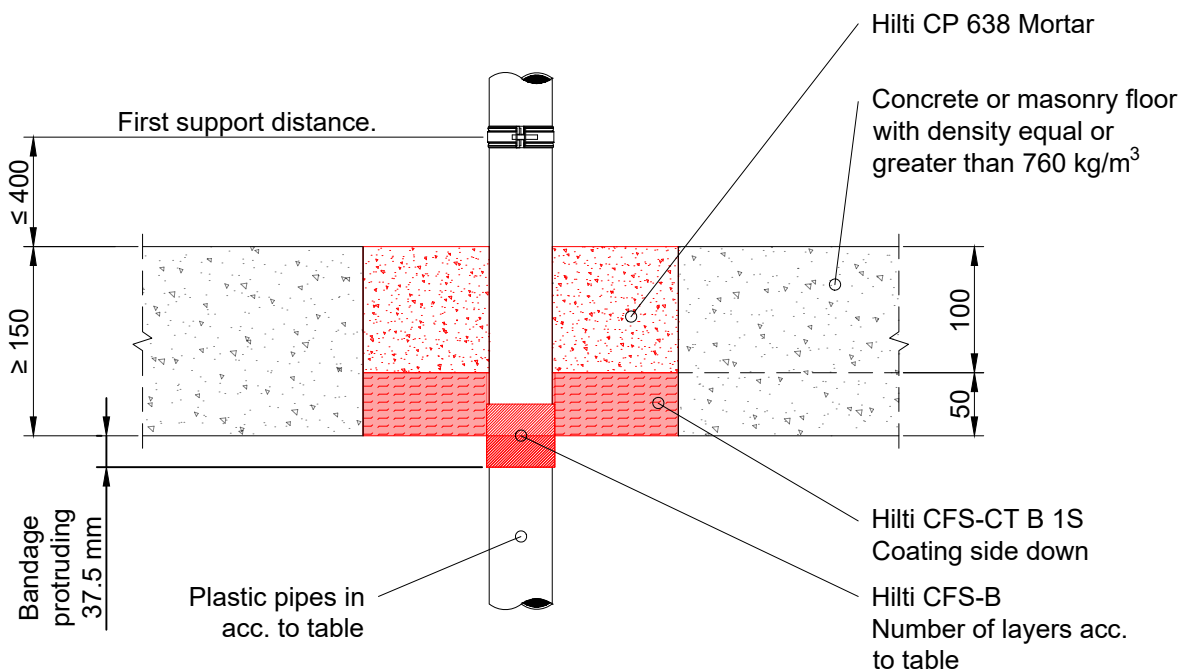
DATE:

01

05/2025

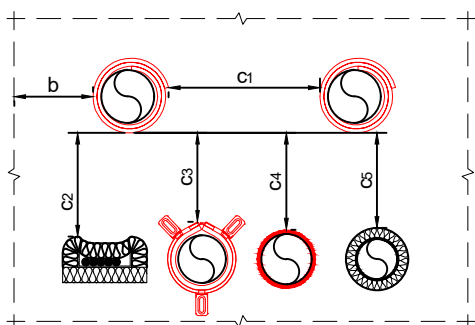
Fire Rating up to EI 180

Page 1/1



Notes:

1. All gaps around services and coated board edges filled with Hilti Firestop Acrylic Sealant CFS-S ACR
2. Hilti Firestop Bandage CFS-B is centrally positioned within pre-coated board. The bandage is protruding 37.5 mm to fire side.



Maximum opening size without additional support: 2000 x 1800 mm or reduced width, with up-to 10m length. See classification report for further details.

PVC pipes in acc. EN 1329-1, EN 1453-1, EN 15493, EN 1452-2. ABS in acc. EN 1455-1 and EN 15493.			
Number of layers	Diameter	Wall thickness	Fire rating in mixed opening
3	50 to 110	1.5 to 2.2/6.6	EI 120-U/U
PE pipes in acc. EN 12201-2, EN 1519-1, EN 15494 and EN 12666-1			
3	40 to 110	1.8 to 2.7/4.2	EI 120-U/U
4	≤ 160	6.2 to 14.5	EI 120-U/U
6	≤ 200	6.2	EI 120-U/U
PP pipes in acc. EN 1451-1, EN 15874 and EN 15494 but not for multilayer PP.			
3	40 to 110	1.8 to 2.7	EI 120-U/U

Spacing overview for mixed seals		
Description	Shortcut	Distance
To seal edge	b	≥ 50 mm
PE/PVC pipes with CFS-B to seal edge		≥ 0 mm
PVC-U pipe to PVC-U pipe with CFS-B	c ₁	≥ 0 mm
PE pipe to PE pipe with CFS-B		≥ 0 mm
To other pipes with CFS-B		≥ 38 mm
To cables with CFS-IS	c ₂	≥ 0 mm
To pipes sealed with CFS-C EL	c ₃	≥ 0 mm
To pipes sealed with CFS-S ACR	c ₄	≥ 0 mm
To any other services	c ₅	≥ 100 mm

1. The application limits on this detail are for guidance purposes only. For more detailed information based on the full range of available test results please contact the Hilti Technical Advisory Service.
2. The product and application has been assessed as a minimum to the BS 476 standard. It may have additional European and worldwide testing. Please contact Hilti for further information.
3. All installations should be carried out in accordance with Hilti's installation instructions and by competent & experienced installers using Hilti branded products.
4. All services are to be correctly and adequately supported to prevent collapse and distortion.

Hilti (Gt. Britain) Limited | No 1, Circle Square | 3 Symphony Park | Manchester | M1 7FS

Freephone: 0800 886 100 | Website: www.hilti.co.uk

LEGAL NOTICE: This template contains Hilti Intellectual Property which is legally protected, including Community registration of Hilti trademarks. For use only by Hilti customers and in conjunction with Hilti products. No third party use/products is authorised and breaches Hilti's intellectual property rights. Hilti accepts no responsibility for unauthorized use and reserves all rights to take legal action to enforce its rights in law.